



---

---

---

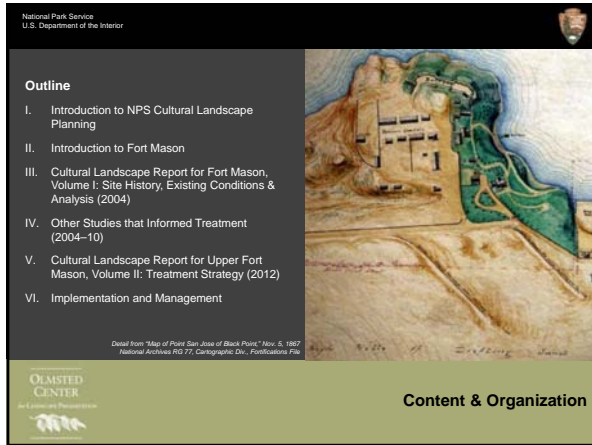
---

---

---

---

---



---

---

---

---

---

---

---

---



---

---

---

---

---

---

---

---



**Cultural Landscape Reports**

- Comprehensive research to guide treatment and use
- Foundation for short and long term treatment and management decisions
- Priorities established to support general management planning and construction projects
- Reports serve as comprehensive reference documents

**Introduction to NPS Cultural Landscape Planning: Guiding Treatment & Use**

OLMSTED CENTER  
of Landscape Architecture

---

---

---

---

---

---

---

---

---

---



**Scoping Cultural Landscape Report Projects**

- Volume 1: Site History, Existing Conditions and Evaluation
- Volume 2: Treatment Recommendations
- Volume 3: Record of Treatment

John Muir National Historic Site  
Cultural Landscape Report Project - 2006

OLMSTED CENTER  
of Landscape Architecture

---

---

---

---

---

---

---

---

---

---



National Park Service  
U.S. Department of the Interior

**Angel Island Immigration Station  
Cultural Landscape Report Project**

OLMSTED CENTER  
of Landscape Architecture

---

---

---

---

---

---

---

---

---

---



---

---

---

---

---

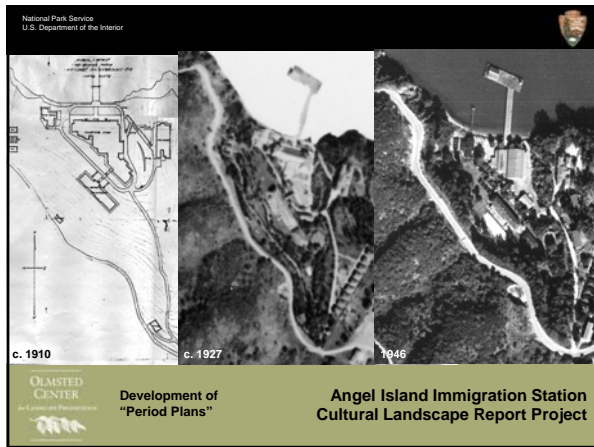
---

---

---

---

---



---

---

---

---

---

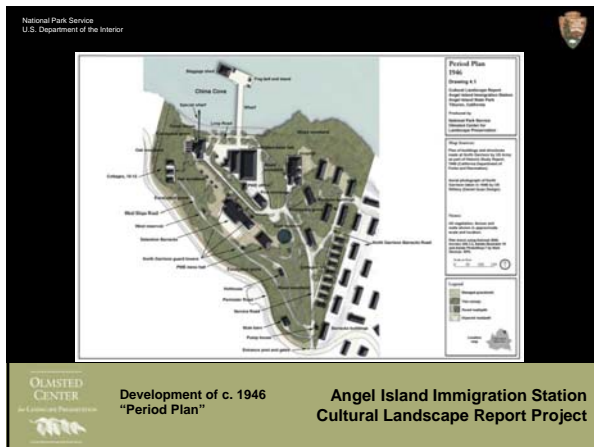
---

---

---

---

---



---

---

---

---

---

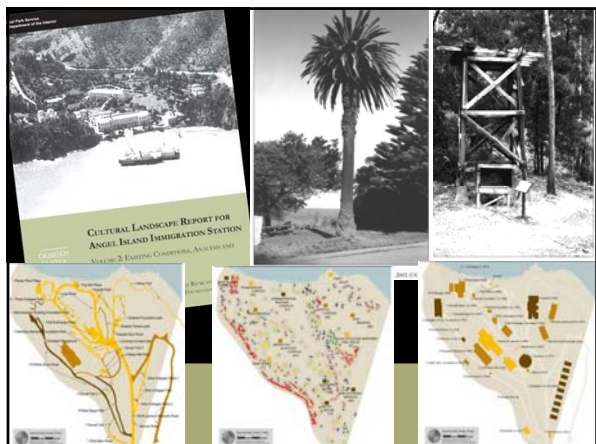
---

---

---

---

---



---

---

---

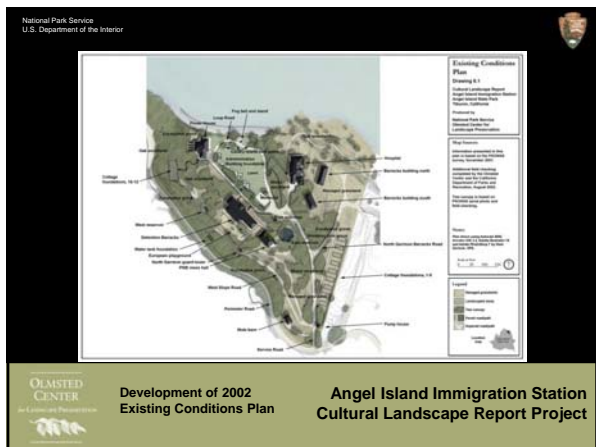
---

---

---

---

---



---

---

---

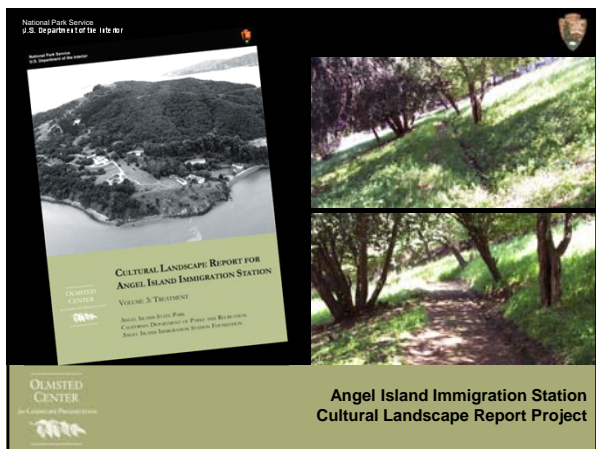
---

---

---

---

---



---

---

---

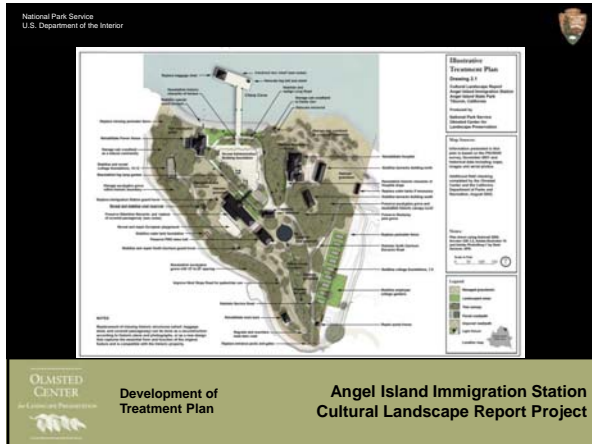
---

---

---

---

---



---

---

---

---

---

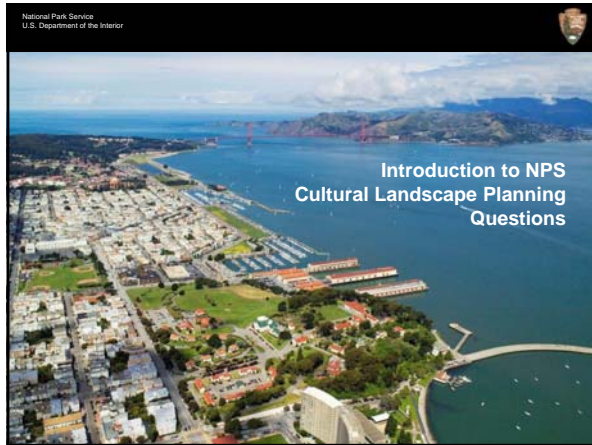
---

---

---

---

---



---

---

---

---

---

---

---

---

---

---



---

---

---

---

---

---

---

---

---

---



---

---

---

---

---

---

---

---



---

---

---

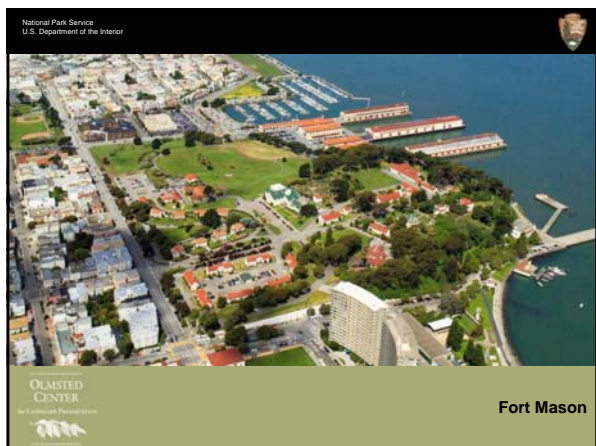
---

---

---

---

---



---

---

---

---

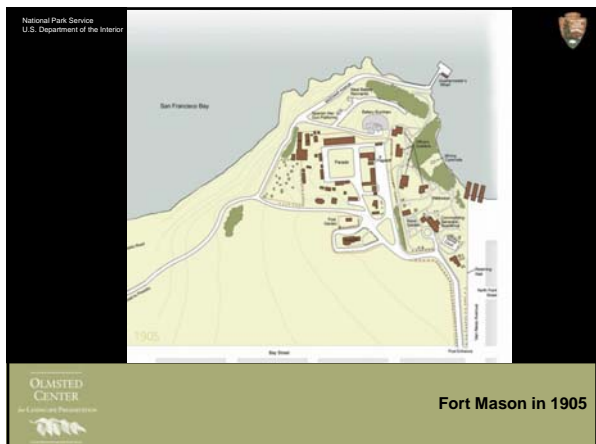
---

---

---

---





---

---

---

---

---

---

---

---



---

---

---

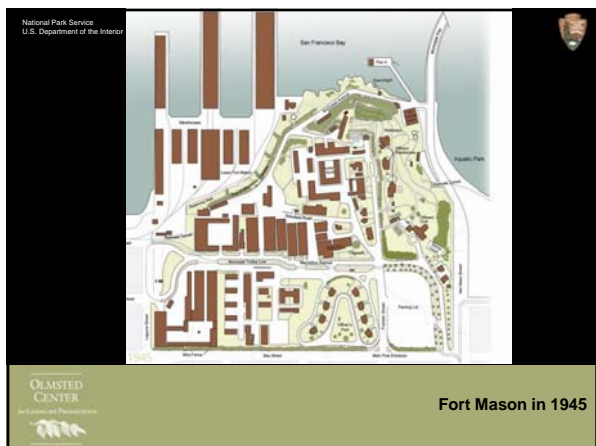
---

---

---

---

---



---

---

---

---

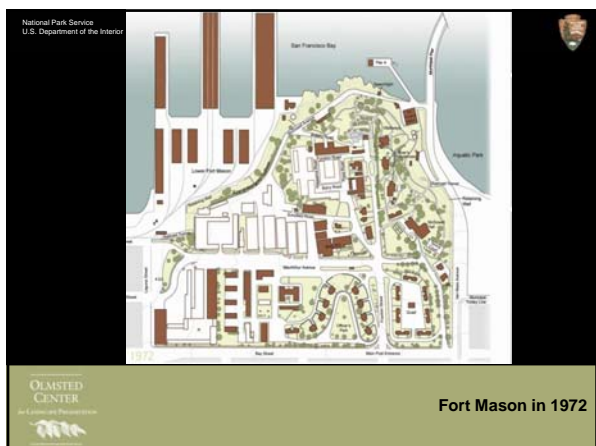
---

---

---

---






---

---

---

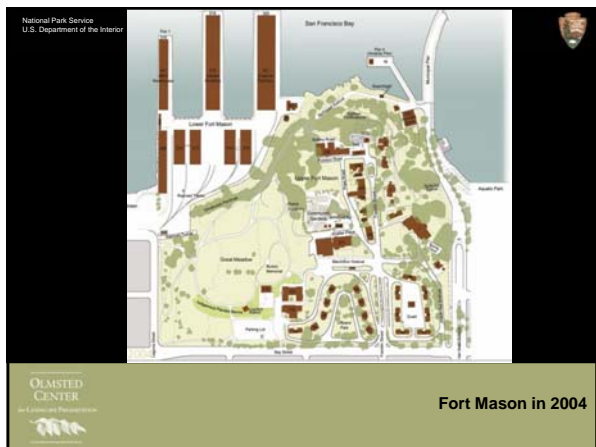
---

---

---

---

---




---

---

---

---

---

---

---

---

National Park Service  
U.S. Department of the Interior

**National Register Status**

**Fort Mason Historic District (1972):**

- Four historic officers' quarters on East Black Point

**Boundary expansion (1979):**

- Entire post, taking in the former San Francisco Port of Embarkation

**Period of significance:** 1855-1953

**Areas of significance:**

- Archaeology – Historic
- Architecture
- Exploration/Settlement
- Landscape Architecture
- Military
- Transportation

Detail from 1868 oil painting of Fort Mason  
Courtesy U.S. Army, Presidio of Monterey

National Park Service  
U.S. Department of the Interior

**Fort Mason CLR Volume I  
Analysis & Evaluation Summary**

---

---

---

---

---

---

---

---


National Park Service  
U.S. Department of the Interior

**Spatial Organization & Topography**

**Upper Fort Mason (55 acres)**

- Black Point
- North Fortifications
- Central Cantonment
- East Waterfront
- North Cliff
- Northwest Embankment
- South Expansion
- Great Meadow

**Lower Fort Mason (13 acres)**



OCLP, Fort Mason CLR v.1

**Fort Mason CLR Volume I  
Analysis & Evaluation Summary**

---

---

---

---

---

---

---

---

---

---


---

---

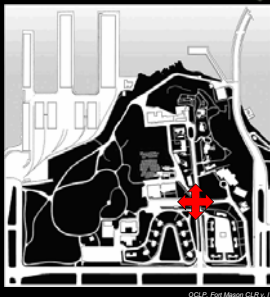
National Park Service  
U.S. Department of the Interior

**Circulation**

- Understood in relation to intersection of Franklin St. and MacArthur Ave.
- Break from the city grid



General View of Photo, c. 1891  
National Archives, RG22, Still Photography Div., Box 10, Series F



OCLP, Fort Mason CLR v.1

**Fort Mason CLR Volume I  
Analysis & Evaluation Summary**

---

---

---

---

---

---

---

---

---

---


---

---

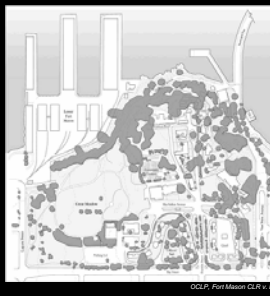
National Park Service  
U.S. Department of the Interior

**Vegetation**

- Important in defining landscape spaces
- Combination of native and non-native species
- Monterey cypress (*Cupressus macrocarpa*) and blue gum (*Eucalyptus globulus*) have colonized widely
- Turf covers most of Upper Fort Mason



Commonly gardens  
OCLP, 2002



OCLP, Fort Mason CLR v.1

**Fort Mason CLR Volume I  
Analysis & Evaluation Summary**

---

---

---

---

---

---

---

---

---

---


---

---


National Park Service  
U.S. Department of the Interior

### Buildings & Structures

- 80 buildings (Upper and Lower Fort Mason)
- 55 are historically significant according to current NR documentation
- Represent a continuum of U.S. Army use from mid-nineteenth century to mid-twentieth century



Officer's Park Housing  
OCLP, 2002



OCLP, Fort Mason CLR v.1

**Fort Mason CLR Volume I  
Analysis & Evaluation Summary**

---

---

---

---

---

---

---

---

---

---

National Park Service  
U.S. Department of the Interior

### Views & Vistas

- Aquatic Park and Black Point Cove
- Flagpole
- Palace of Fine Arts
- Golden Gate Bridge
- San Francisco Bay



View to Black Clow  
OCLP, 2002



OCLP, Fort Mason CLR v.1

**Fort Mason CLR Volume I  
Analysis & Evaluation Summary**

---

---

---

---

---

---

---

---

---

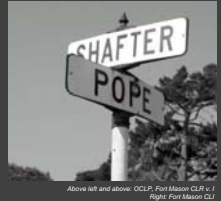
---

National Park Service  
U.S. Department of the Interior



### Small-scale Features

Important contributors to landscape character:

- Fencing
- Lighting
- Signage
- Utility-related



Above left and above: OCLP, Fort Mason CLR v.1  
Right: Fort Mason CL



OCLP, Fort Mason CLR v.1

**Fort Mason CLR Volume I  
Analysis & Evaluation Summary**

---

---

---

---

---

---

---

---


---

---

National Park Service  
U.S. Department of the Interior

**Archeological Resources**

- Upper Fort Mason is managed as an archeological site, shown in light gray at right
- Know archaeological sites exist in isolated areas, shown in dark gray at right
- Known artifacts include:
  - Faunal material (shell and bird, fish and mammal bone)
  - Aboriginal artifacts (lithic tools, bone tools and ornaments, shell beads, grinding stones, quartz crystal, ochre, and other items)



OCLP, Fort Mason CLR v. 1

**Fort Mason CLR Volume I  
Analysis & Evaluation Summary**

OLMSTED CENTER  
and Landscape Preservation

---

---

---

---

---

---

---

---

---

---

National Park Service  
U.S. Department of the Interior

**CLR Vol. I Preliminary Recommendations**

- Redesign intersection of Bay St. and Franklin St.
  - Resolve terminus of MacArthur Ave.
- Inventory foundation plantings and specimen vegetation
- Develop landscape maintenance guide
  - Undertake natural resources assessment of the North Cliff area
  - Complete viewshed assessment and management plan for the North Fortification and Black Point areas
  - Undertake environmental evaluation of Transformer House for contamination
  - Research inadequately documented small-scale features
- Prune overgrown foundation plantings
- Remove trash and undertake vegetation management on East Black Point slope

OCLP, Fort Mason CLR v. 1

**Fort Mason CLR Volume I  
Preliminary Recommendations Summary**

OLMSTED CENTER  
and Landscape Preservation

---

---

---

---

---

---


---

---

---

---

National Park Service  
U.S. Department of the Interior



**CLR Volume I:  
Site History, Existing  
Conditions & Analysis  
Questions**

---

---

---

---

---

---

---

---

---

---



National Park Service  
U.S. Department of the Interior

### NCO Quarters Cultural Landscape History & Existing Conditions

Robin Abad Ocuillo

- Graphic survey of landscape development at Buildings 230-239 along northern Franklin St.
- Photographic documentation of existing landscape conditions

**OLMSTED CENTER**  
and Landscape Architecture

**NCO Quarters Cultural Landscape Research Findings Summary**

---

---

---

---

---

---

---

---

---

---

---

---

National Park Service  
U.S. Department of the Interior

### Waterfront Corridor Visitor Experience Assessment

OCRA Consulting

- Joint planning effort with S.F. Maritime NHP, GGNRA, and Ft. Mason Historic District
- Extend the waterfront promenade around Black Point to connect SF Maritime to Lower Fort Mason
- Encourage pedestrian access to Upper Fort Mason from the east and west
- Develop a new public transportation hub at the entrance to Lower Fort Mason

**OLMSTED CENTER**  
and Landscape Architecture

**Waterfront Corridor Visitor Experience Assessment Findings Summary**

---

---

---

---

---

---

---

---

---

---

---

---

National Park Service  
U.S. Department of the Interior

### Primary Treatment Approach

Rehabilitation

**Treatment Reference Date**  
1953

**Treatment Philosophy**  
Priorities: Views, Vegetation, and Access

**Successful Landscape Management**

- Affordable
- Achievable
- Balanced
- Environmentally-conscious
- Maintainable
- Preservation-oriented
- Publically-accessible

**OLMSTED CENTER**  
and Landscape Architecture

**Treatment Framework**

---

---

---

---

---

---

---

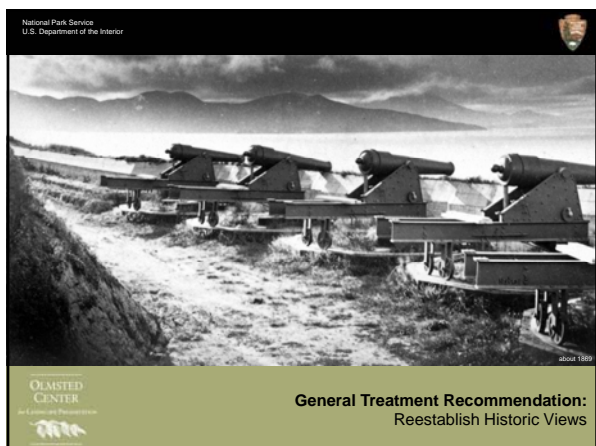
---

---

---

---

---



---

---

---

---

---

---

---

---



---

---

---

---

---

---

---

---



---

---

---

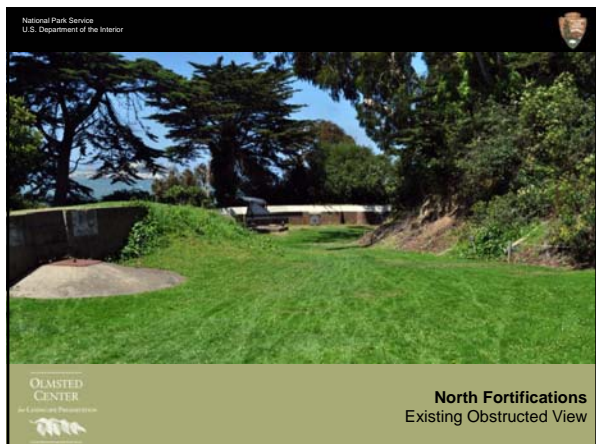
---

---

---

---

---



---

---

---

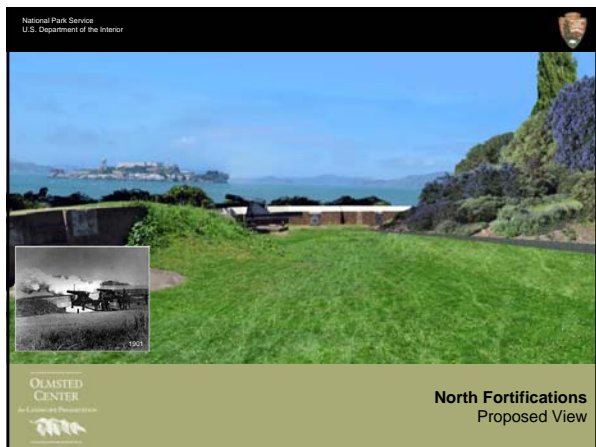
---

---

---

---

---



---

---

---

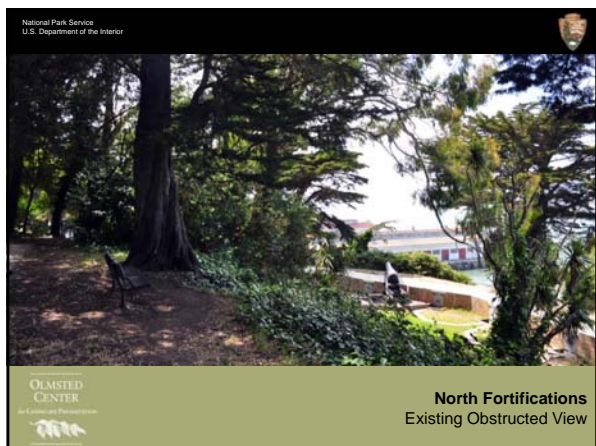
---

---

---

---

---



---

---

---

---

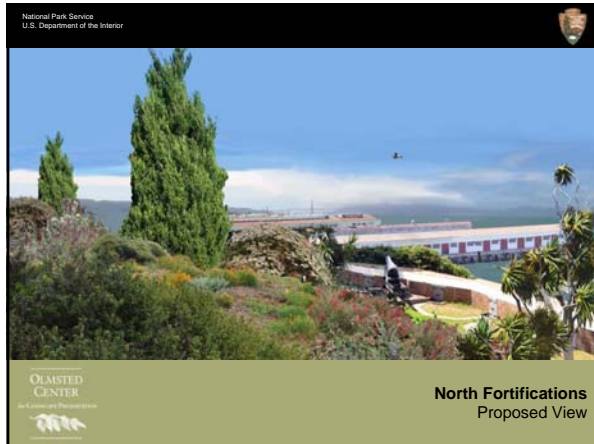
---

---

---

---





---

---

---

---

---

---

---

---



---

---

---

---

---

---

---

---



---

---

---

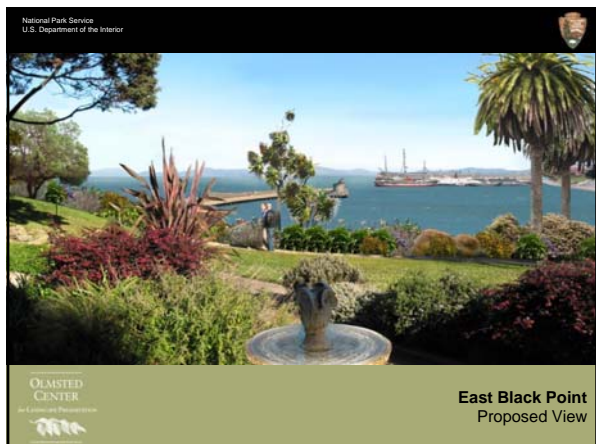
---

---

---

---

---



---

---

---

---

---

---

---

---

---

---



---

---

---

---

---

---

---

---

---

---



---

---

---

---

---

---

---

---

---

---



---

---

---

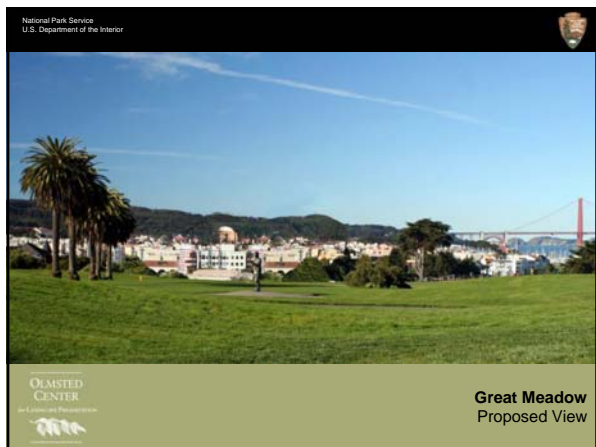
---

---

---

---

---



---

---

---

---

---

---

---

---



---

---

---

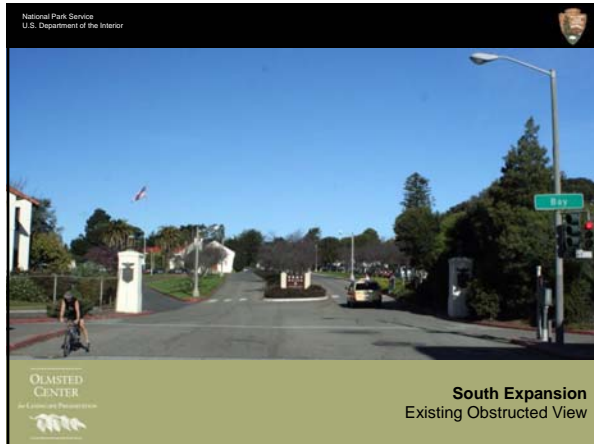
---

---

---

---

---



---

---

---

---

---

---

---

---

---

---



---

---

---

---

---

---

---

---

---

---



---

---

---

---

---

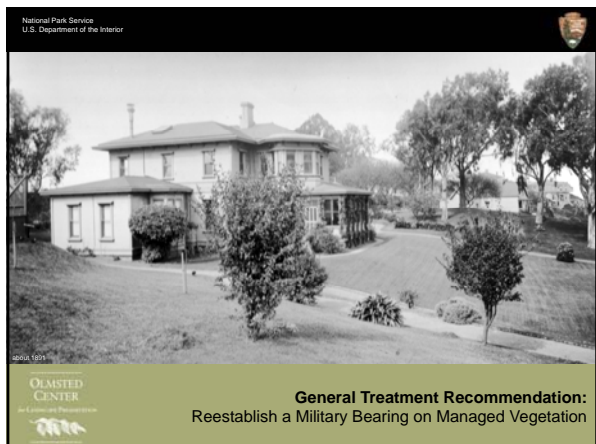
---

---

---

---

---



---

---

---

---

---

---

---

---



---

---

---

---

---

---

---

---



---

---

---

---

---

---

---

---



---

---

---

---

---

---

---

---

---

---



---

---

---

---

---

---

---

---

---

---



---

---

---

---

---

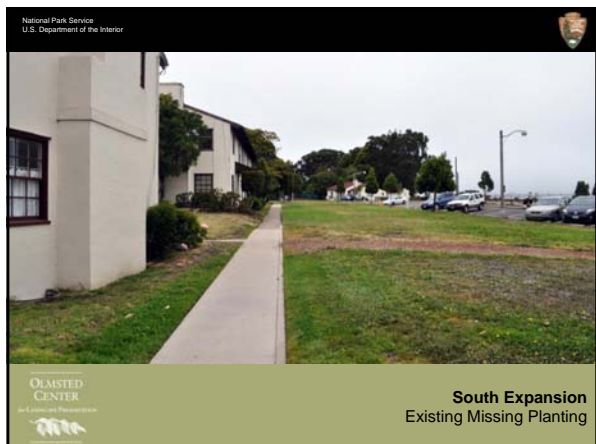
---

---

---

---

---



---

---

---

---

---

---

---

---

---

---



---

---

---

---

---

---

---

---

---

---



---

---

---

---

---

---

---

---

---

---



---

---

---

---

---

---

---

---



---

---

---

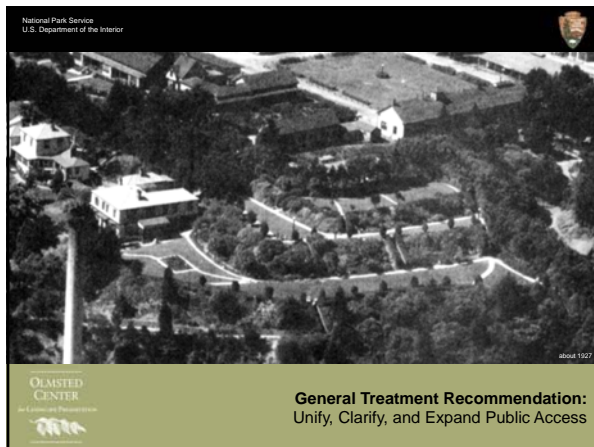
---

---

---

---

---



---

---

---

---

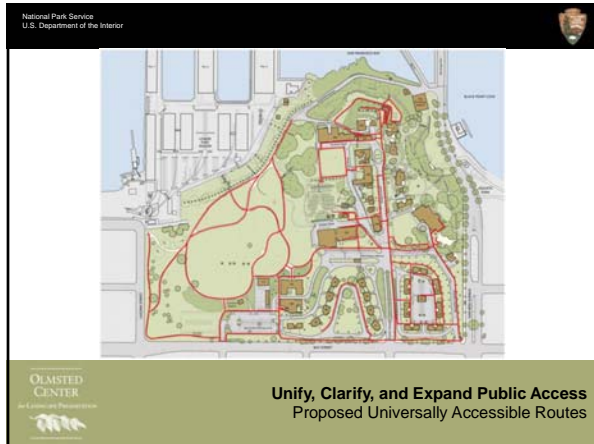
---

---

---

---





---

---

---

---

---

---

---

---



---

---

---

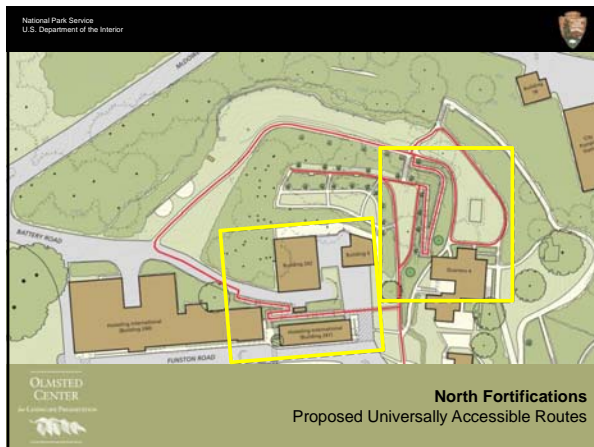
---

---

---

---

---



---

---

---

---

---

---

---

---



---

---

---

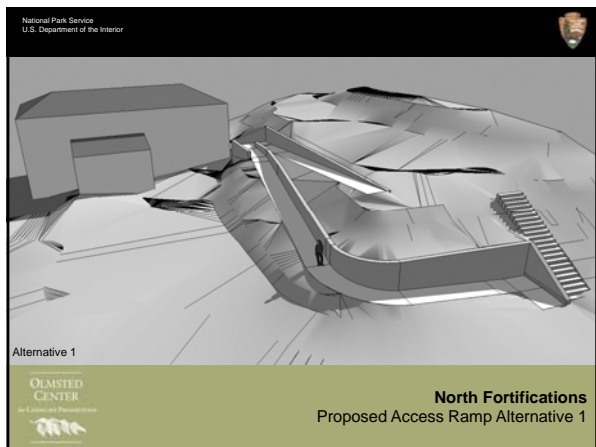
---

---

---

---

---



---

---

---

---

---

---

---

---



---

---

---

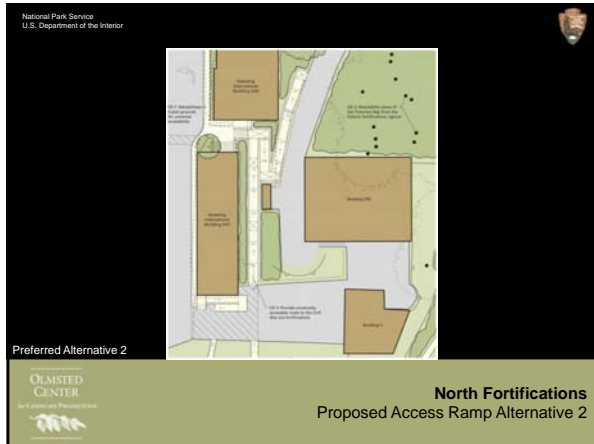
---

---

---

---

---



---

---

---

---

---

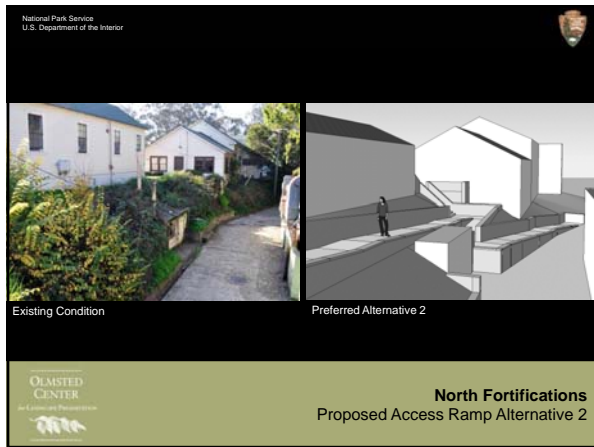
---

---

---

---

---



---

---

---

---

---

---

---

---

---

---



---

---

---

---

---

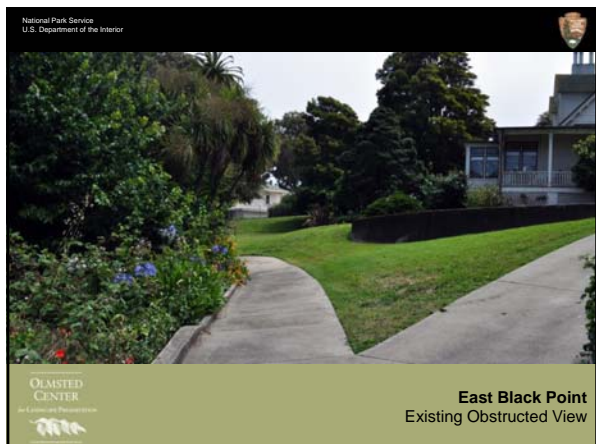
---

---

---

---

---



---

---

---

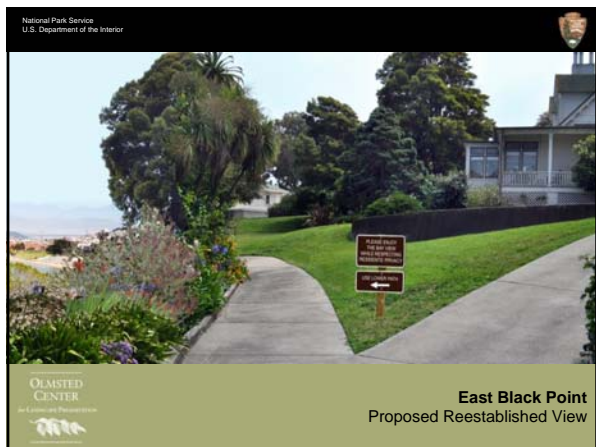
---

---

---

---

---



---

---

---

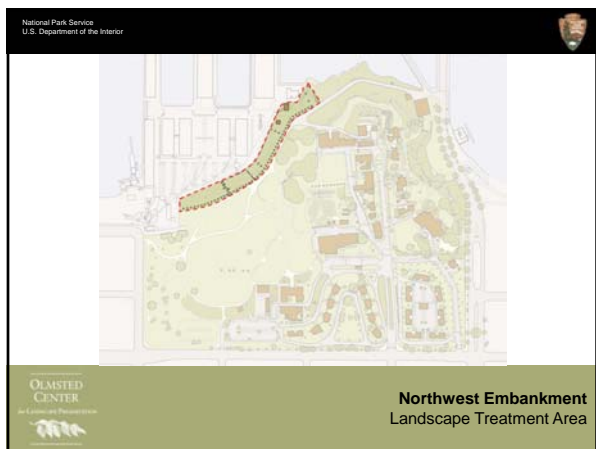
---

---

---

---

---



---

---

---

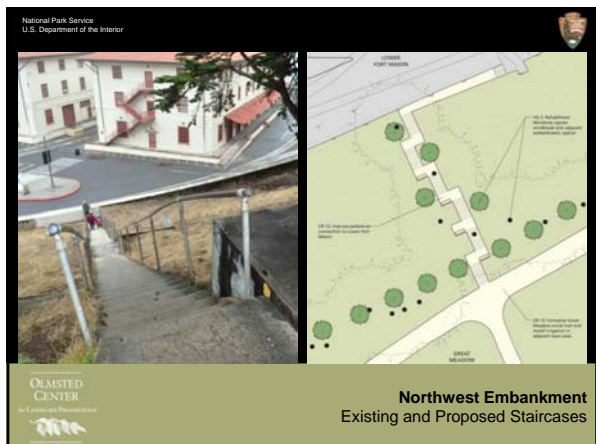
---

---

---

---

---



---

---

---

---

---

---

---

---



---

---

---

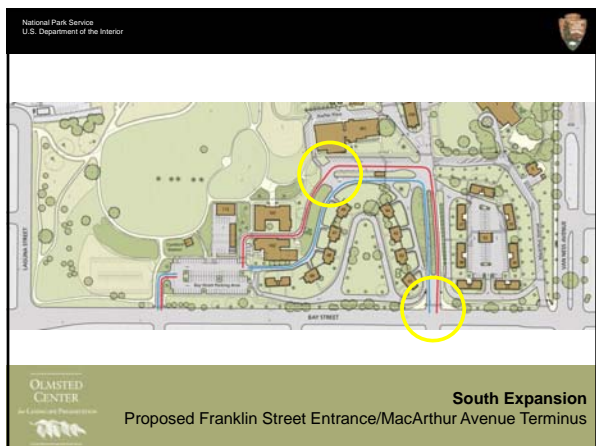
---

---

---

---

---



---

---

---

---

---

---

---

---



---

---

---

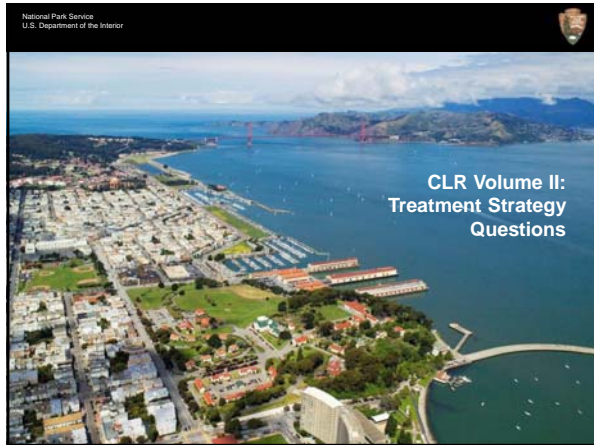
---

---

---

---

---



---

---

---

---

---

---

---

---



---

---

---

---

---

---

---

---



---

---

---

---

---

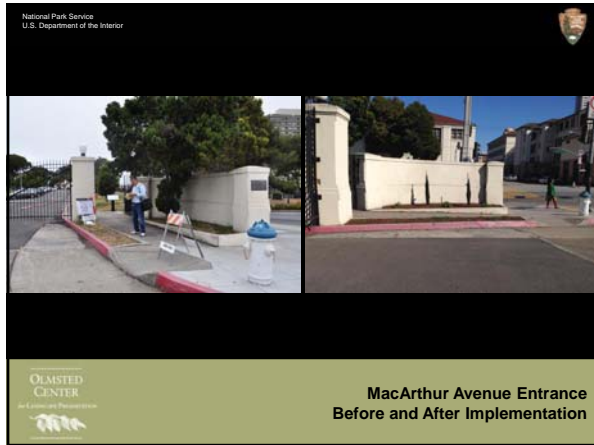
---

---

---

---

---



---

---

---

---

---

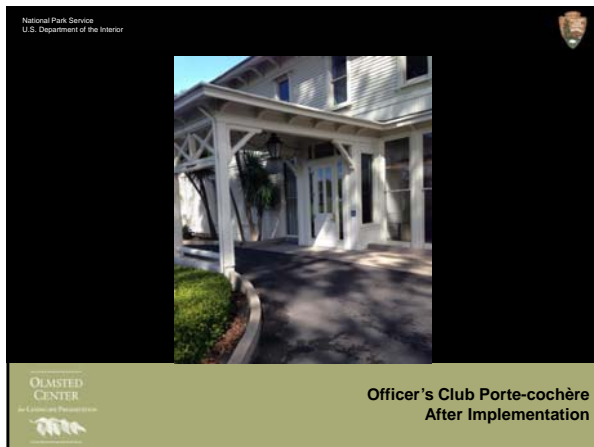
---

---

---

---

---



---

---

---

---

---

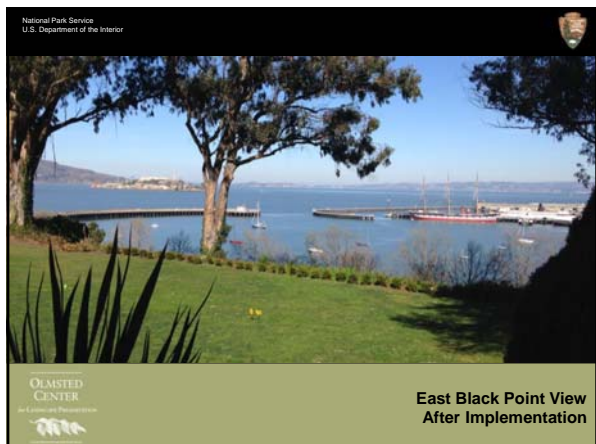
---

---

---

---

---



---

---

---

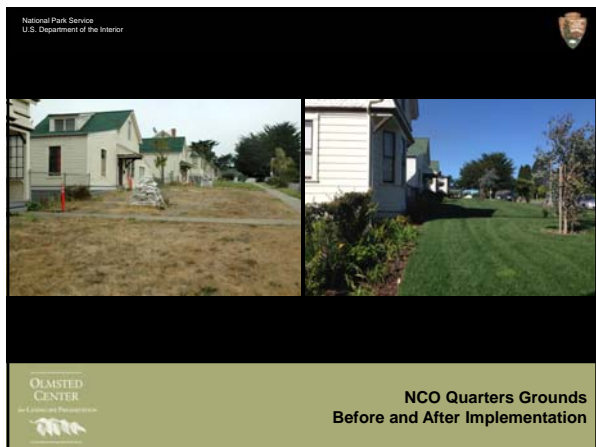
---

---

---

---

---



---

---

---

---

---

---

---

---



---

---

---

---

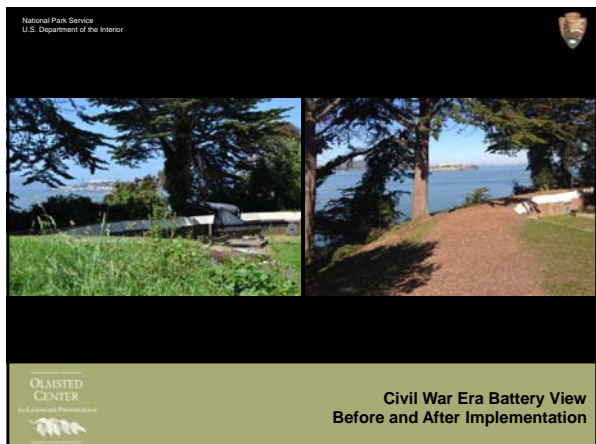
---

---

---

---





---

---

---

---

---

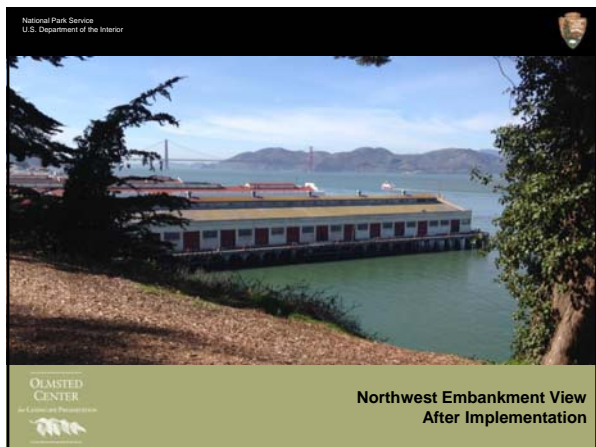
---

---

---

---

---



---

---

---

---

---

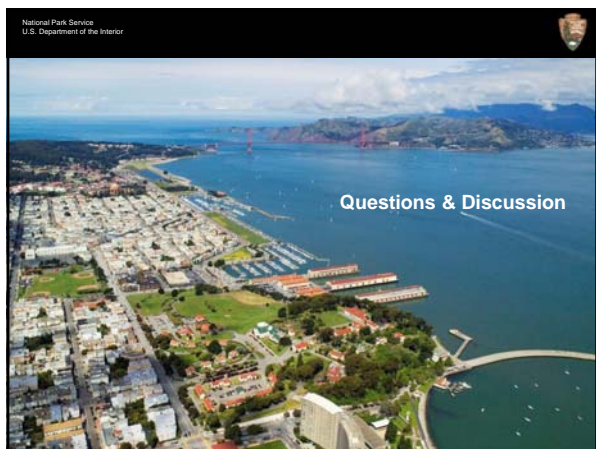
---

---

---

---

---



---

---

---

---

---

---

---

---

---

---